

# OMR ANSWER SHEET

USE BLACK/BLUE BALL POINT PEN ONLY

Original copy

NAME OF THE CANDIDATE

FATHER'S NAME

P.G. Entrance Test, 2024

KEY

PROGRAMME NAME / SUBJECT NAME

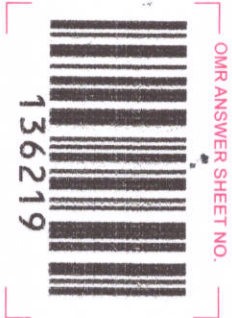
M.Sc. Forensic Science. (MA/M.Sc.)

Roll No.									
1	1	1	1	1	1	1	1	1	1
2	2	2	2	2	2	2	2	2	2
3	3	3	3	3	3	3	3	3	3
4	4	4	4	4	4	4	4	4	4
5	5	5	5	5	5	5	5	5	5
6	6	6	6	6	6	6	6	6	6
7	7	7	7	7	7	7	7	7	7
8	8	8	8	8	8	8	8	8	8
9	9	9	9	9	9	9	9	9	9
0	0	0	0	0	0	0	0	0	0

Q. Booklet No.									
1	1	1	1	1	1	1	1	1	1
2	2	2	2	2	2	2	2	2	2
3	3	3	3	3	3	3	3	3	3
4	4	4	4	4	4	4	4	4	4
5	5	5	5	5	5	5	5	5	5
6	6	6	6	6	6	6	6	6	6
7	7	7	7	7	7	7	7	7	7
8	8	8	8	8	8	8	8	8	8
9	9	9	9	9	9	9	9	9	9
0	0	0	0	0	0	0	0	0	0

Paper Code				
2	4	1	4	3
1	1	●	1	1
●	2	2	2	2
3	3	3	3	●
4	●	4	●	4
5	5	5	5	5
6	6	6	6	6
7	7	7	7	7
8	8	8	8	8
9	9	9	9	9
0	0	0	0	0

Question Booklet Series
C
A
B
●
D



1	●	B	C	D	26	A	●	C	D	51	●	B	C	D	76	●	B	C	D
2	A	B	●	D	27	●	B	C	D	52	●	B	C	D	77	A	B	●	D
3	●	B	C	D	28	A	●	C	D	53	A	●	C	D	78	A	●	C	D
4	A	●	C	D	29	A	B	C	●	54	●	B	C	D	79	A	B	C	●
5	A	B	●	D	30	A	B	C	●	55	A	B	●	D	80	A	●	C	D
6	A	B	●	D	31	A	●	C	D	56	A	B	C	●	81	A	B	C	●
7	A	●	C	D	32	●	B	C	D	57	A	●	C	D	82	●	B	C	D
8	A	●	C	D	33	A	B	●	D	58	A	B	●	D	83	A	B	●	D
9	A	B	C	●	34	A	B	●	D	59	A	B	C	●	84	A	●	C	D
10	A	●	C	D	35	A	●	C	D	60	●	B	C	D	85	A	B	●	D
11	A	●	C	D	36	A	●	C	D	61	A	B	●	D	86	A	B	C	●
12	●	B	C	D	37	●	B	C	D	62	A	B	●	D	87	●	B	C	D
13	A	B	C	●	38	A	B	C	●	63	A	●	C	D	88	A	B	●	D
14	A	●	C	D	39	●	B	C	D	64	A	B	●	D	89	A	●	C	D
15	A	B	●	D	40	A	B	●	D	65	A	B	C	●	90	A	B	C	●
16	A	B	●	D	41	A	B	C	●	66	A	●	C	D	91	●	B	C	D
17	●	B	C	D	42	A	●	C	D	67	A	B	●	D	92	A	B	●	D
18	A	B	C	●	43	A	B	●	D	68	A	B	●	D	93	A	B	●	D
19	A	●	C	D	44	A	●	C	D	69	A	●	C	D	94	A	B	C	●
20	●	B	C	D	45	●	B	C	D	70	A	B	●	D	95	●	B	C	D
21	A	B	C	●	46	A	B	C	●	71	A	●	C	D	96	A	●	C	D
22	A	●	C	D	47	A	B	●	D	72	●	B	C	D	97	A	B	●	D
23	●	B	C	D	48	A	●	C	D	73	A	B	C	●	98	●	B	C	D
24	A	●	C	D	49	●	B	C	D	74	●	B	C	D	99	●	B	C	D
25	A	●	C	D	50	A	●	C	D	75	A	B	●	D	100	A	B	●	D

*Paul of Hali*  
*S. Shaniga*  
Signature of the Candidate

*[Signature]*  
Signature of the Invigilator with Date